



2003 Yamaha FJR1300

VIN Number **JYARP07E63A000583**

Report Date **08/25/2020**

Report ID **68f40a0f3c4ea8bf5**

Vehicle Specifications

The vehicle specifications below are derived by decoding the VIN and only select specification as provided by the manufacturer.

Year 2003	Make Yamaha	Model FJR1300	Body No data
Trim -	Manufactured In JAPAN	Production SEQ 000583	Engine Type 1298CC
Transmission No data	Driveline No data	Anti-Break System No data	Steering Type No data
Tank No data	MPG City No data	MPG Highway No data	Standard Seating No data
Optional Seating No data	Length/Width/Hight (in.) No data/No data/No data		



NMVTIS History

The NMVTIS history report will provide you with title information, junk, salvage, insurance info, odometer checks and more!



✓ Title Info

Title info records found.



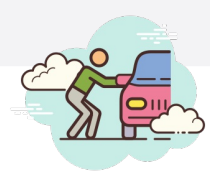
✓ Junk/Salvage

No Junk / Salvage records found.



✓ Title Check

No title check records found.



✓ Theft Flag

No thefts reported by NVS.

Title Information

Valid for 60 days after purchase date.

Source: NMVTIS

This section shows you each State where the vehicle has been titled, when it was titled, the odometer reading on the date of title, etc. There is good information here to protect you from fraud. Keep an eye out for the odometer readings. If the current odometer reading is less than it was in one of these title records, you might suspect a fraud tactic called Odometer Rollback. To obtain more details on this VIN in the state please click the applicable state link from the "State of Title".

TITLE ISSUE DATE	STATE OF TITLE	MILEAGE	TITLE TYPE	VIN
05/30/2019	TX	EXEMPT	Current	JYARP07E63A000583
08/27/2012	TX	19793	History	JYARP07E63A000583
08/22/2005	GA	7424	History	JYARP07E63A000583

Junk/Salvage

Source: NMVTIS

No records found.

Insurance Information

Source: NMVTIS

No records found.

Damage, Safety & Other Title Brands

Source: NMVTIS

A title brand is an official record of damage or other information about a vehicle that could affect its value or the ability to operate it safely. For example, a rebuilt title brand means the vehicle has suffered enough damage to be declared a total loss by an insurance company and then was rebuilt. A title brand remains on record for the life of the vehicle. This section gives you a summary view of the total number of Brands associated with this VIN since its first record of sale. If this section shows any hits, a description of the brand will be listed alongside the name of the brand and the date in which it was branded.

No records found.

Title Check

A title brand is an official record of damage or other information about a vehicle that could affect its value or the ability to operate it safely.

Source: NMVTIS

Flood Damage

 No issues detected

Fire Damage

 No issues detected

Hail Damage No issues detected

Salt Water Damage No issues detected

Vandalism No issues detected

Kit Car No issues detected

Dismantled No issues detected

Junk No issues detected

Vehicle Rebuilt No issues detected

Reconstructed No issues detected

Salvage Damage or Not Specified No issues detected

Test Vehicle No issues detected

Refurbished No issues detected

Collision No issues detected

Prior Salvage No issues detected

Salvage Retention No issues detected

Prior Taxi No issues detected

Prior Police No issues detected

Current Taxi No issues detected

Current Police No issues detected

Re-Manufacture No issues detected

Gray Market No issues detected

Warranty Return No issues detected

Antique No issues detected

Classic No issues detected

Agriculture Vehicle No issues detected

Logging Vehicle No issues detected

Street Rod No issues detected

Reissued VIN No issues detected

Replica No issues detected

Totaled No issues detected

Owner Retained No issues detected

Bond Posted No issues detected

Memorandum Copy No issues detected

Parts Only No issues detected

Recovered Theft No issues detected

Undisclosed Lien No issues detected

Prior Owner Retained No issues detected

Non-conformity Uncorrected No issues detected

Non-conformity Corrected No issues detected

Safety Defect Uncorrected No issues detected

Safety Defect Corrected No issues detected

Replaced by New State Assigned VIN No issues detected

Gray Market Not Compliant No issues detected

Gray Market Compliant No issues detected

Manufacturer Buyback No issues detected

Former Rental No issues detected

Salvage Stolen No issues detected

Salvage Reasons Other Than Damage or Stolen No issues detected

Disclosed Damage No issues detected

Prior Non-repairable or Repaired No issues detected

Crushed No issues detected

Export Only Vehicle No issues detected

Odometer Check

Source: NMVTIS

Actual Mileage No issues detected

Not Actual Mileage No issues detected

Verified tampered No issues detected

Exempt from Odometer Disclosure No issues detected

Exceeds Mechanical Limits No issues detected

Altered No issues detected

Replaced No issues detected

Reading at Time of Renewal No issues detected

Odometer Discrepancy No issues detected

Call Title Division No issues detected

Rectify Previous Exceeds Mechanical Limits No issues detected



NVS History

National Vehicle Service (NVS), highly regarded as the vehicle finance industries link to law enforcement throughout North America.

Lien No issues detected

Open Recalls No issues detected

Impound No issues detected

Export No issues detected

Theft Flag No issues detected

Recall Information



This section contains information from National Highway Traffic Safety Administration Vehicle Safety. To find out if your vehicle still has open recalls that require repair, VINsmart recommends contacting an authorized dealer for more information.

Vehicle speed control

Recall #06V371000 Date: 09/28/2006

Summary

On certain motorcycles, an improperly designed throttle position sensor could cause an intermittently unstable idle when the engine is at idling speed when the motorcycle is stopped or during low-speed operations. The engine could stall as a result.

Consequence

If the engine stalls after the operator disengages the clutch in a low gear while riding, the rear tire might slip momentarily if the operator abruptly re-engages the clutch. This could result in a crash with injury or death.

Remedy

Dealers will replace the throttle position sensor free of charge. The recall began on October 16, 2006. Owners may contact Yamaha at 1-888-88-yamaha.

Notes

Customers may also contact the National Highway Traffic Safety Administration's vehicle safety hotline at 1-888-327-4236 (tty 1-800-424-9153), or go to <http://www.safercar.gov>.

Disclaimer

NMVTIS Consumer Access Product Disclaimer

The National Motor Vehicle Title Information System (NMVTIS) is an electronic system that contains information on certain automobiles titled in the United States. NMVTIS is intended to serve as a reliable source of title and [brand](#) history for automobiles, but it does not contain detailed information regarding a vehicle's repair history.

All states, insurance companies, and junk and salvage yards are required by federal law to regularly report information to NMVTIS. However, NMVTIS does not contain information on all motor vehicles in the United States because [some states](#) are not yet providing their vehicle data to the system. Currently, the data provided to NMVTIS by states is provided in a variety of time frames; while some states report and update NMVTIS data in "real-time" (as title transactions occur), other states send updates less frequently, such as once every 24 hours or within a period of days.

Information on previous, significant vehicle damage may not be included in the system if the vehicle was never determined by an insurance company (or other appropriate entity) to be a "total loss" or branded by a state titling agency. Conversely, an insurance carrier may be required to report a "total loss" even if the vehicle's titling-state has not determined the vehicle to be "salvage" or "junk".

A vehicle history report is NOT a substitute for an independent vehicle inspection. Before making a decision to purchase a vehicle, consumers are **strongly encouraged to also obtain an independent vehicle inspection** to ensure the vehicle does not have hidden damage. The [Approved NMVTIS Data Providers](#) (look for the NMVTIS logo) can include vehicle condition data from sources other than NMVTIS.

NMVTIS data **INCLUDES** (as available by those entities required to report to the System):

- Information from participating state motor vehicle titling agencies.
- Information on automobiles, buses, trucks, motorcycles, recreational vehicles, motor homes, and tractors. NMVTIS may not currently include commercial vehicles if those vehicles are not included in a state's primary database for title records (in some states, those vehicles are managed by a separate state agency), although these records may be added at a later time.
- Information on brands applied to vehicles provided by participating state motor vehicle titling agencies. Brand types and definitions vary by state, but may provide useful information about the condition or prior use of the vehicle.
- Most recent odometer reading in the state's title record.
- Information from insurance companies, and auto recyclers, including junk and salvage yards, that is required by law to be reported to the system, beginning March 31, 2009. This information will include if the vehicle was determined to be a total loss by an insurance carrier.
- Information from junk and salvage yards receiving a cash for clunker vehicle traded-in under the Consumer Assistance to Recycle and Save Act of 2009 (CARS) Program.

Consumers are advised to visit www.vehiclehistory.gov for details on how to interpret the information in the system and understand the meaning of various labels applied to vehicles by the participating state motor vehicle titling agencies. VINsmart prepares its vehicle history and title reports based on data from government sources and independent agencies, including NMVTIS.

VINsmart Disclaimer

VINsmart prepares its vehicle history and title reports based on data from government sources and independent agencies, including without limitation NMVTIS and NVS (collectively, "Data Sources"). VINsmart relies on its Data Sources for the accuracy and reliability of the information provided in its reports. VINsmart neither enters nor validates the data from its Data Sources, and does not guarantee the accuracy or completeness of the data provided.

Therefore, PLEASE BE ADVISED that (i) some state data pertaining to a VIN may not be contained in or available through any Data Source, (ii) some state data is provided to a Data Source via a daily, weekly or monthly format and therefore may not be current, (iii) some providers of data pertaining to a VIN (whether governmental or otherwise) may have failed to provide such data for incorporation into the Data Source, and (iv) neither VINsmart nor any Data Source has any control over the accuracy or completeness of data contained in any Data Source and none of them shall have any liability to any user or any third party concerning the quality, completeness or accuracy of any Data Source data.

Therefore, no responsibility is assumed by VINsmart or its agents for errors or omissions in this report. VINsmart further expressly disclaims all warranties, express or implied, including any implied warranties of merchantability or fitness for a particular purpose. This report may not be assigned or otherwise transferred, nor may the data be resold or otherwise transmitted, without the prior written permission of VINsmart in its absolute discretion.

If for any reason, a report we deliver does not have information from the applicable Data Source, we will gladly issue a credit towards your next vehicle history report, or refund your money, minus a \$2 processing fee, no questions asked. PLEASE NOTE: Canadian VINs, and chassis/incomplete vans or trucks will NOT be valued.

NVS - Vehicle Lien Disclaimer

All of our lien history data comes from The National Vehicle Service (NVS). When lien information is filed with each State, it may take 30 days or more (depending on the state) for the information to (be reflected in) public databases. There is a chance your VINsmart report may not contain the most updated lien information because it has not yet (part of) a public record. Please contact your local DMV for further confirmation on liens.

NADA® and Black Book® – Valuation Information Disclaimer

VINsmart is able to provide the attached valuation data from various third-party providers, including without limitation Black Book® and NADA® (collectively, "Value Sources"). VINsmart relies on its Value Sources for the accuracy and reliability of the information provided in its reports. VINsmart neither enters nor validates the data from its Value Sources, and cannot and does not guarantee the accuracy or completeness of the data provided.

Therefore, no responsibility is assumed by VINsmart or its agents for errors or omissions in the attached report(s). VINsmart further expressly disclaims all warranties, express or implied, including any implied warranties of merchantability or fitness for a particular purpose. The attached report(s) may not be assigned or otherwise transferred, nor may the data be resold or otherwise transmitted, without the prior written permission of VINsmart in its absolute discretion.

NHTSA - Recall Information Disclaimer

Regarding any history published or provided by VINsmart from the National Highway Traffic Safety Administration ("NHTSA") and/or the U.S. Department of Transportation ("DOT") with regard to a vehicle hereunder ("Recall History"), please be advised that VINsmart makes no claims, promises or guarantees about the accuracy, completeness, or adequacy of the Recall History and expressly disclaims liability for errors and omissions in the contents of the Recall History. No warranty of any kind, implied, expressed or statutory, including but not limited to the warranties of non-infringement of third party rights, title, merchantability, fitness for a particular purpose and freedom from computer virus, is given with respect to the contents of the Recall History. Reference in this Recall History to any specific commercial products, processes, or services, or the use of any trade, firm or corporation name is for the information and convenience of the public, and does not constitute endorsement, recommendation, or favoring by either VINsmart or NHTSA/DOT.

Trademark Disclaimer

The marks and third-party trademarks appearing in this report and their respective names, logos, emblems, slogans and vehicle model names and body designs are trademarks and/or service marks of their respective holders. Use of them does not imply any affiliation with or endorsement by them. Any reference by VINsmart to third-party trademarks is to identify the corresponding third-party goods and/or services and shall be considered nominative fair use under the trademark law.